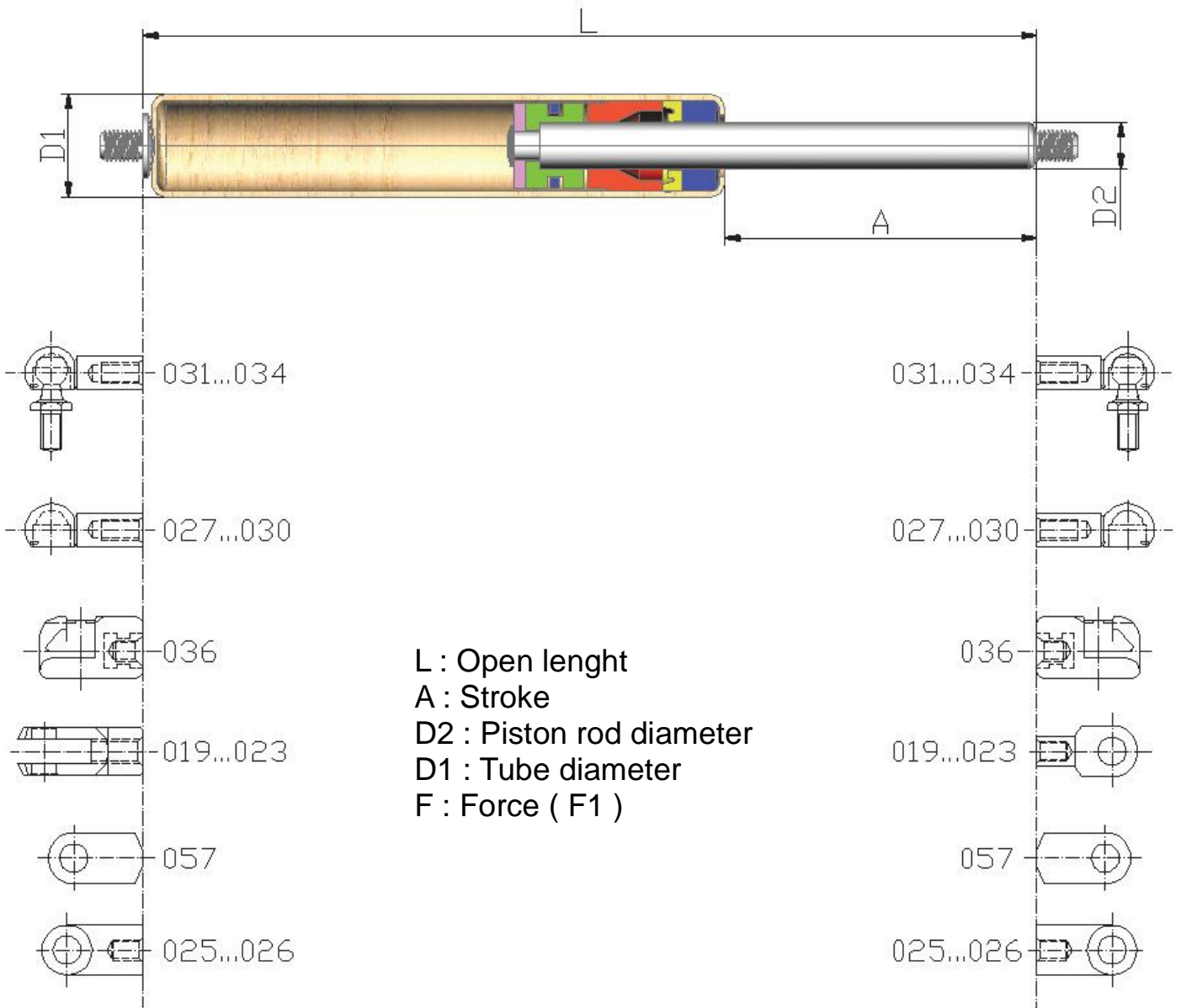


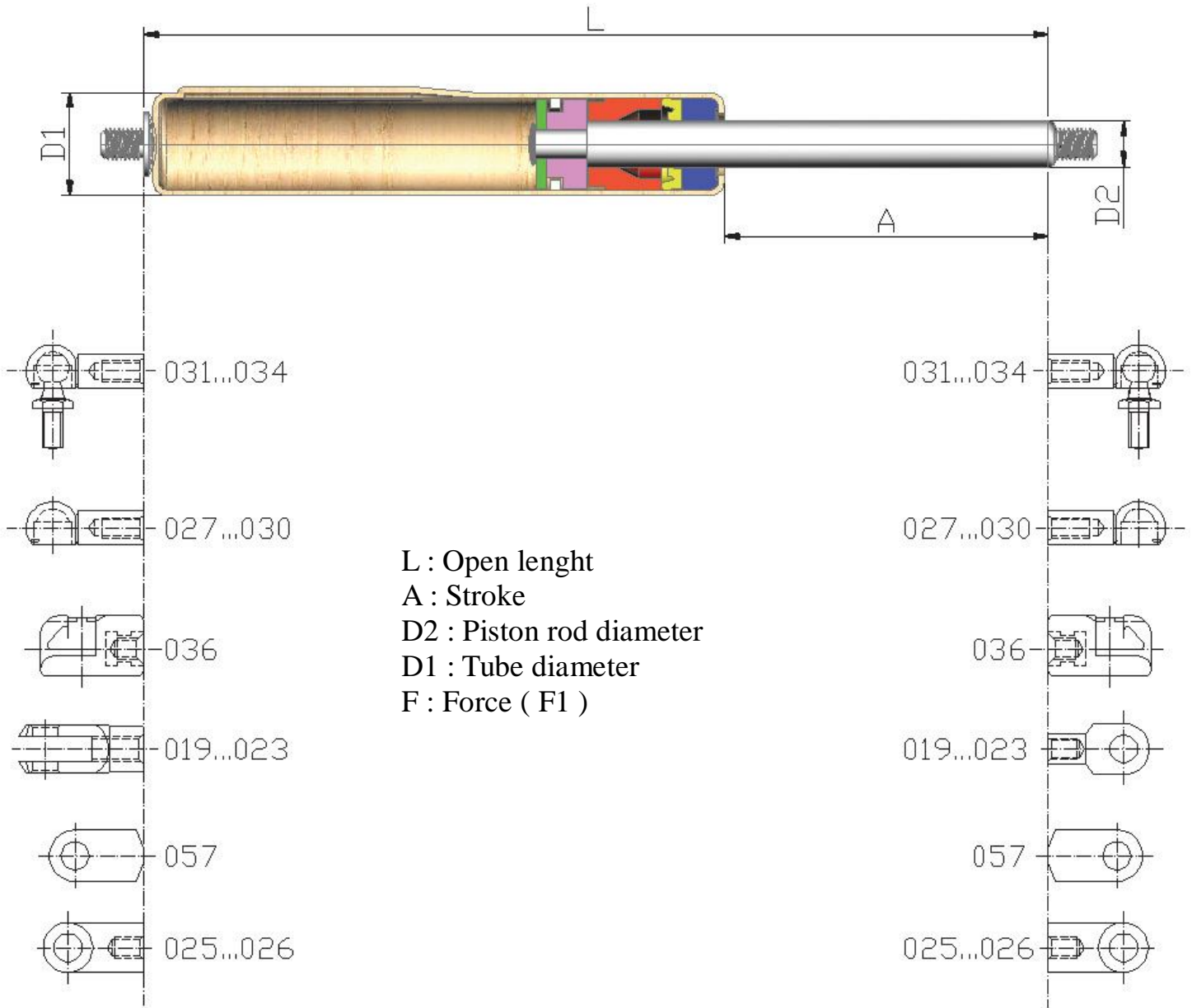
**Amortizoare  
pe gaz  
2013**

• **GAS SPRINGS**



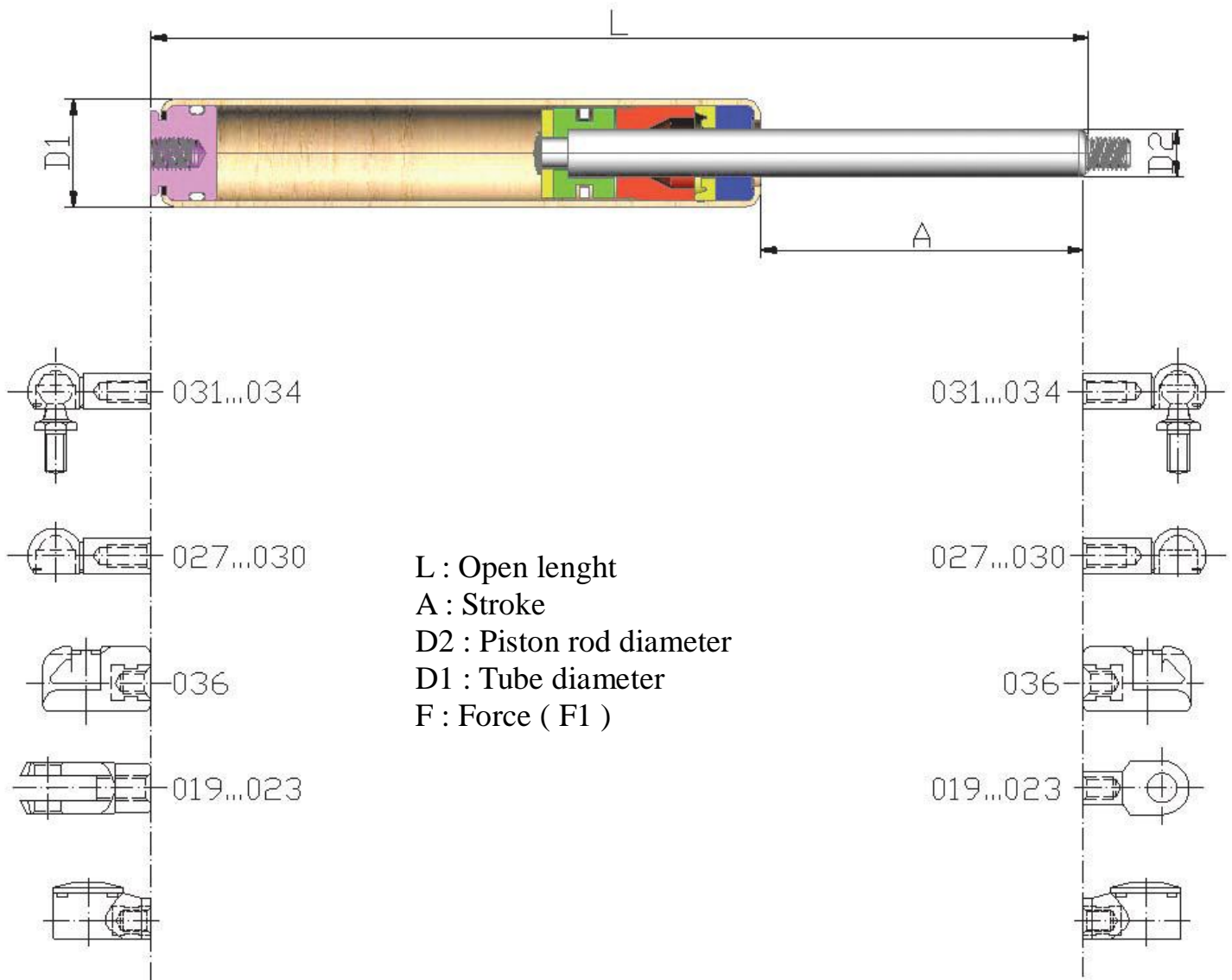
TYPE		L		A		F	
D1	D2	Min.	Max.	Min.	Max.	Min.	Max.
15	06	90	400	20	150	50	350
18	08	100	700	25	300	50	700
22	10	150	900	40	400	100	1200
27	14	250	1500	50	700	250	1500
28	14	300	1500	50	700	1000	2500

• **SPECIAL TYPE (POSITION FREE MOUNTING)**



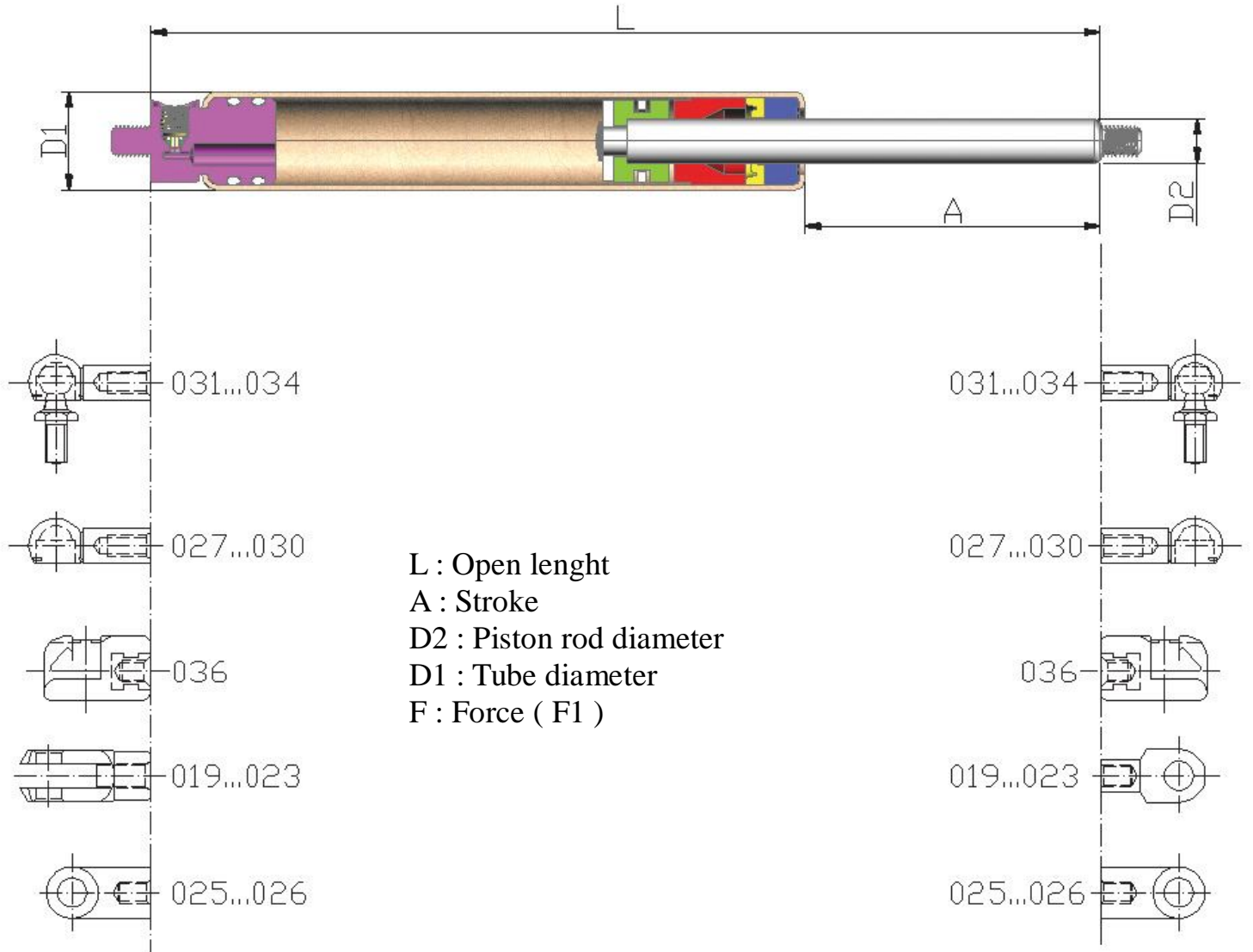
TYPE		L		A		F	
D1	D2	Min.	Max.	Min.	Max.	Min.	Max.
15	06	90	400	20	150	50	350
18	08	100	700	25	300	50	700
22	10	150	900	40	400	100	1200
27	14	250	1500	50	700	250	1500

## • *STAINLESS STEEL GAS SPRINGS*



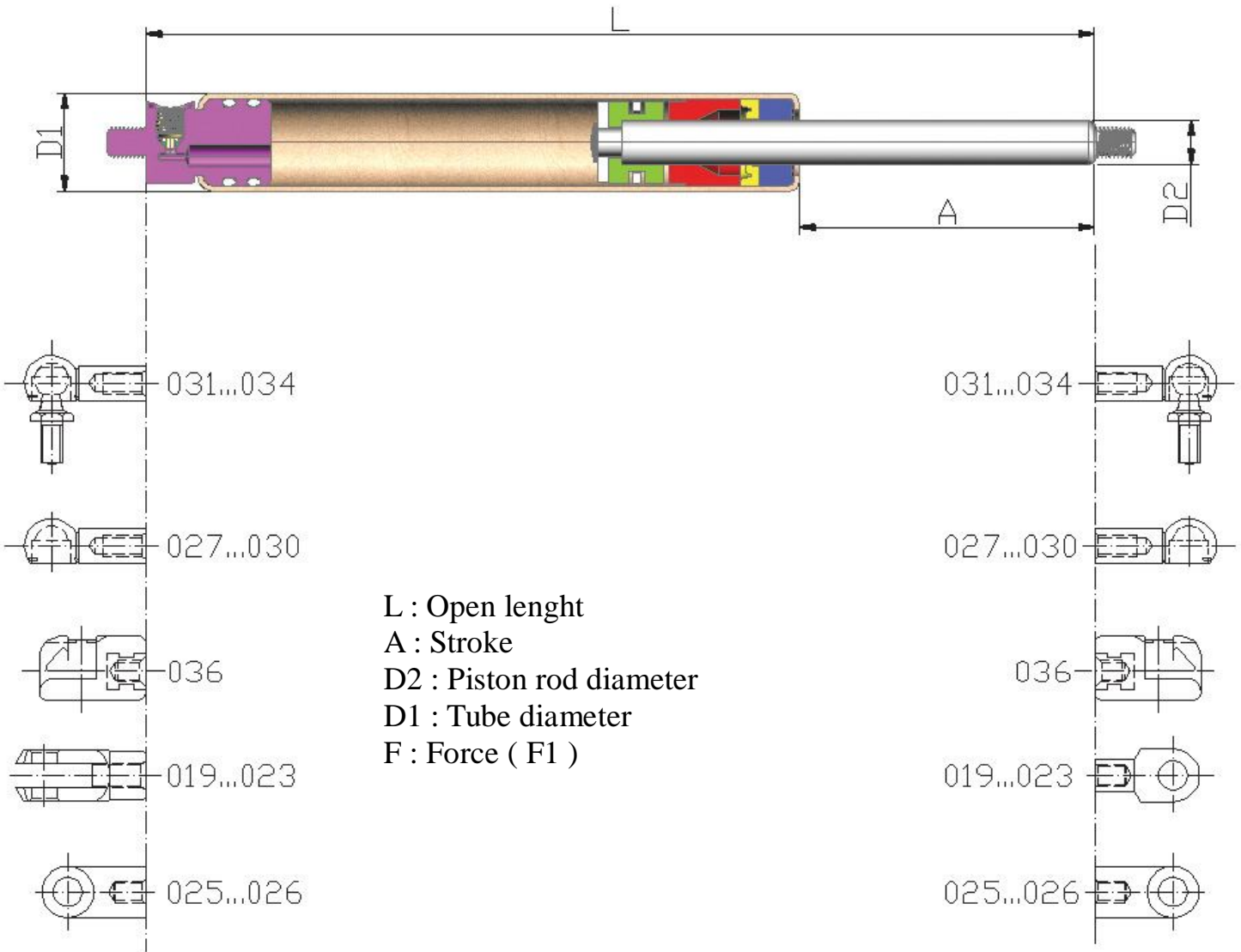
TYPE		L		A		F	
D1	D2	Min.	Max.	Min.	Max.	Min.	Max.
15	06	90	400	20	150	50	350
18	08	100	700	25	300	50	700
22	10	150	900	40	400	100	1200
27	14	250	1500	50	700	250	1500

## • ADJUSTABLE PRESSURE GAS SPRINGS



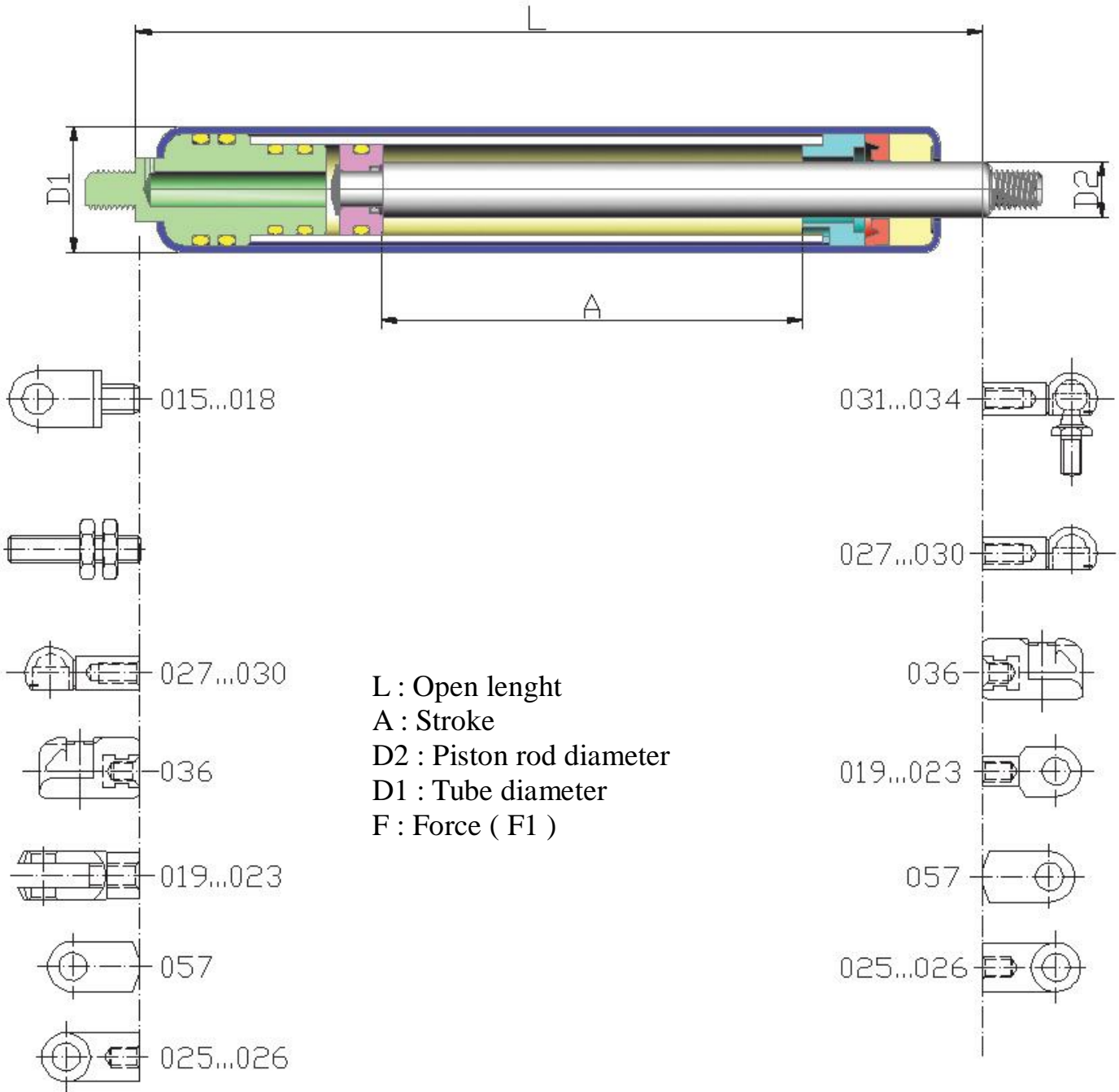
TYPE		L		A		F	
D1	D2	Min.	Max.	Min.	Max.	Min.	Max.
15	06	90	400	20	150	50	350
18	08	100	700	25	300	50	700
22	10	150	900	40	400	100	1200
27	14	250	1500	50	700	250	1500
28	14	300	1500	50	700	1000	2500

**• ADJUSTABLE PRESSURE  
STAINLESS STEEL GAS SPRINGS**



TYPE		L		A		F	
D1	D2	Min.	Max.	Min.	Max.	Min.	Max.
15	06	90	400	20	150	50	350
18	08	100	700	25	300	50	700
21	10	150	900	40	400	100	1200
27	14	250	1500	50	700	250	2500

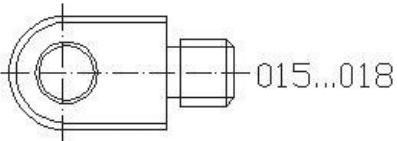
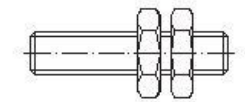
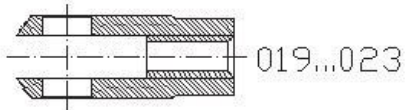
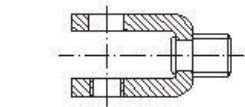
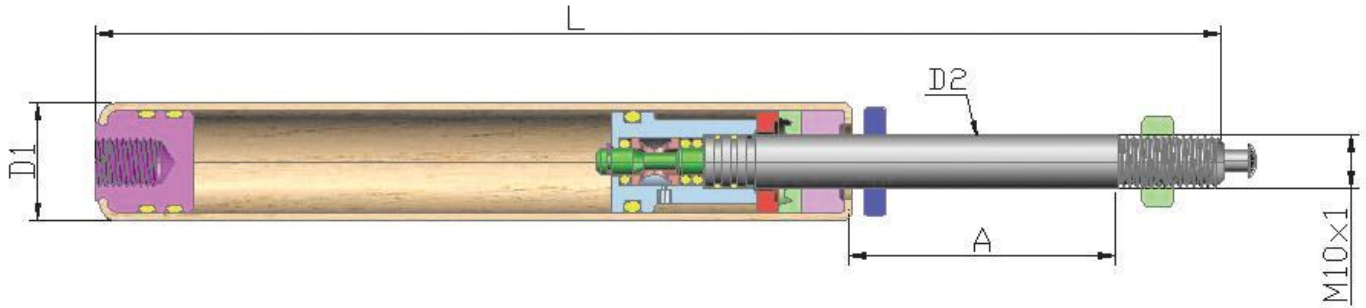
## • TRACTION GAS SPRINGS



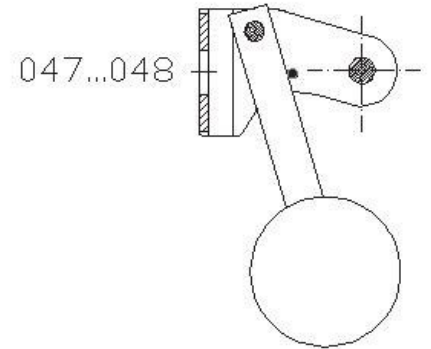
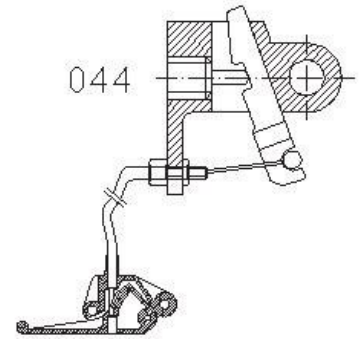
TYPE		L		A		F	
D1	D2	Min.	Max.	Min.	Max.	Min.	Max.
18	08	100	700	25	300	50	700
22	10	150	900	40	400	100	1200
27	10	250	1000	50	400	250	1500



## • FLEXIBLE BLOCKABLE GAS SPRINGS



L : Open length  
 A : Stroke  
 D2 : Piston rod diameter  
 D1 : Tube diameter  
 F : Force ( F1 )



TYPE		L		A		F	
D1	D2	Min.	Max.	Min.	Max.	Min.	Max.
22	10	150	500	10	200	50	600
27	10	230	800	20	350	200	1500

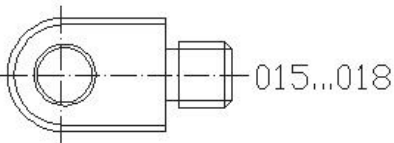
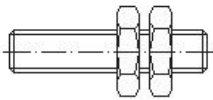
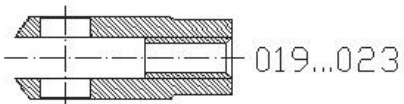
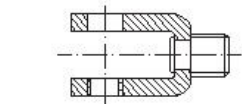
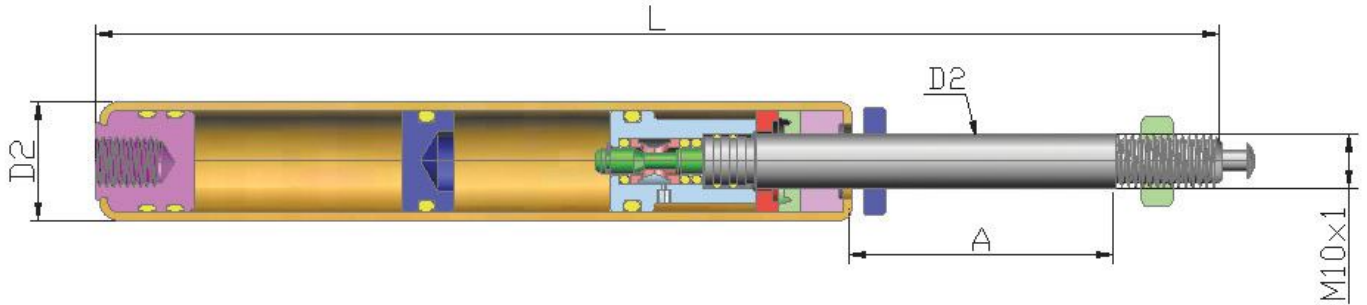
Short type

22	10	100	200	10	50	100	600
----	----	-----	-----	----	----	-----	-----

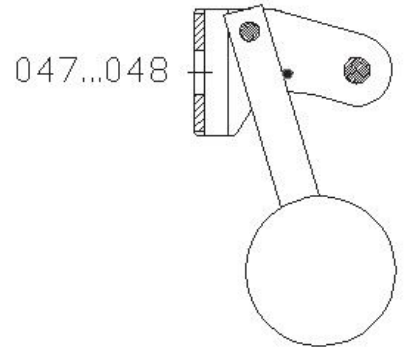
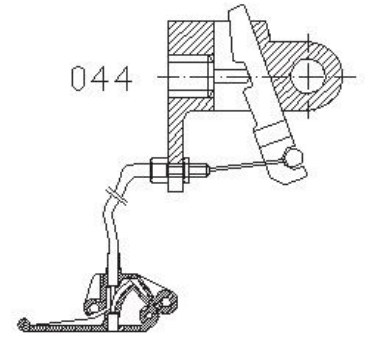


# • RIGID BLOCKLE GAS SPRINGS

**RIGID IN COMPRESSION**  
**RIGID IN EXTENSION**  
**BLOCKABLE TRACTION GAS SPRINGS**

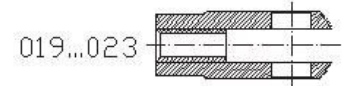
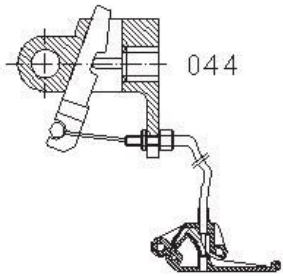
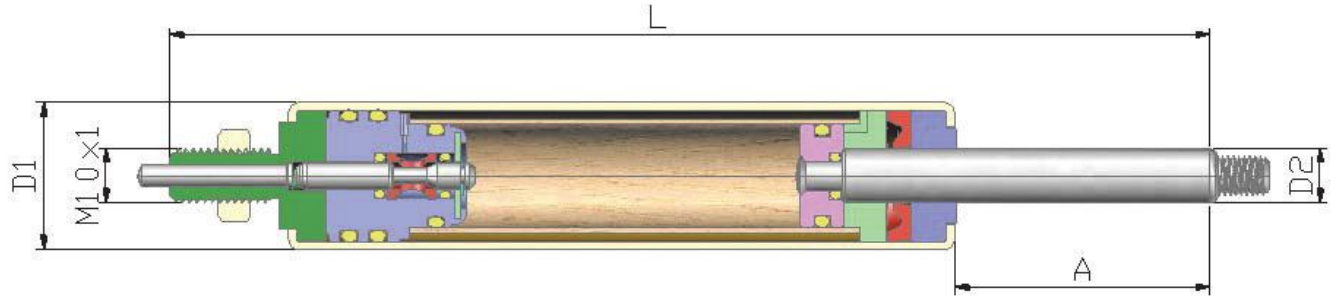


L : Open length  
 A : Stroke  
 D2 : Piston rod diameter  
 D1 : Tube diameter  
 F : Force ( F1 )

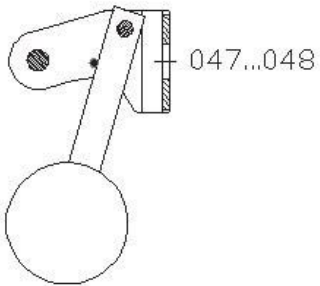
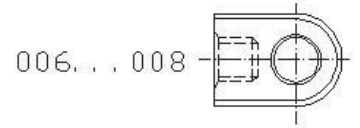


TYPE		L		A		F	
D1	D2	Min.	Max.	Min.	Max.	Min.	Max.
22	10	150	500	10	200	50	600
27	10	230	800	20	350	200	1500

• **BLOCKABLE GAS SPRINGS WHIT  
TUBE END PIN (FLEXIBLE)**

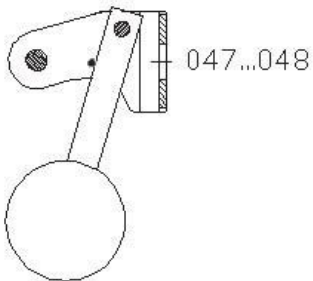
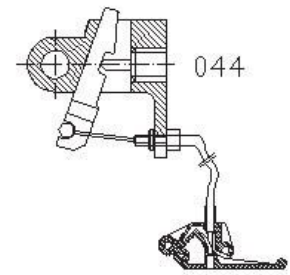
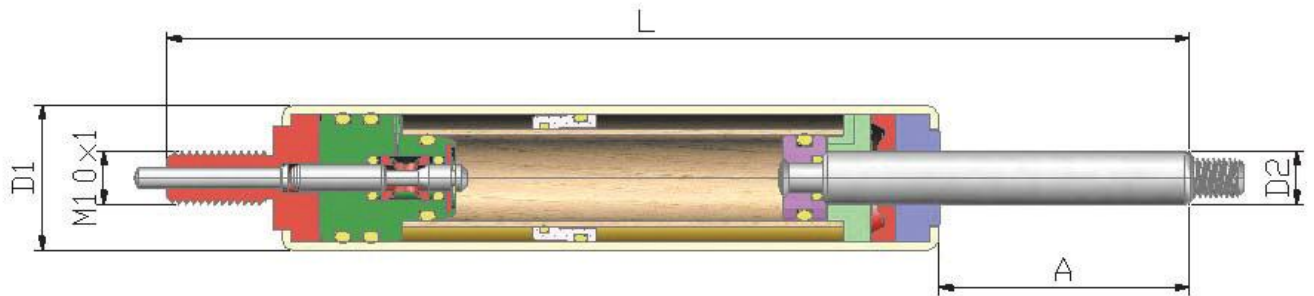


L : Open length  
A : Stroke  
D2 : Piston rod diameter  
D1 : Tube diameter  
F : Force ( F1 )

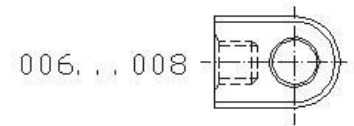
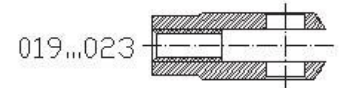


TYPE		L		A		F	
D1	D2	Min.	Max.	Min.	Max.	Min.	Max.
22	10	230	1000	50	400	130	800
27	10	230	1000	50	400	130	1500

• **BLOCKABLE GAS SPRINGS WHIT  
TUBE END PIN (RIGID)**

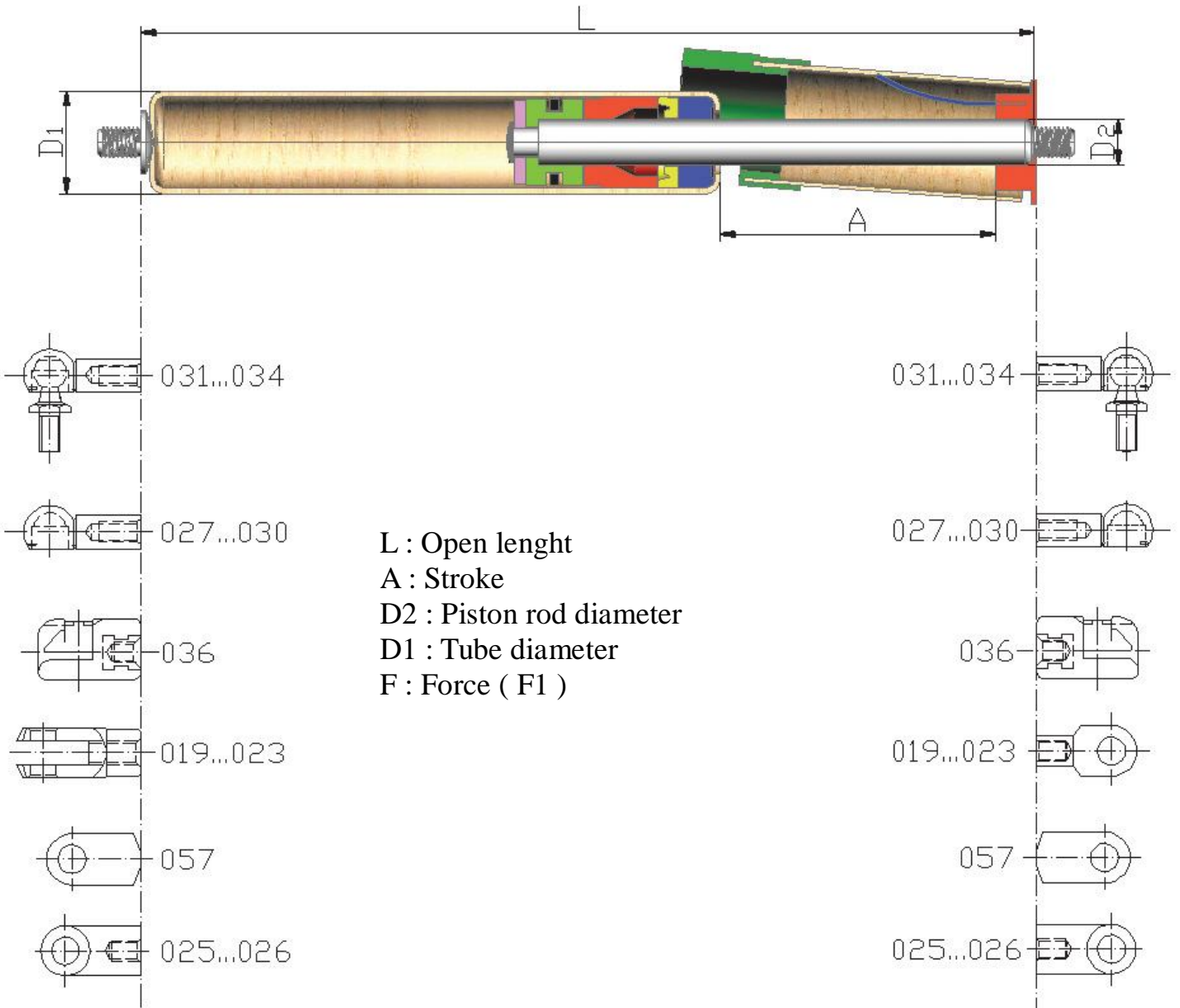


L : Open length  
A : Stroke  
D2 : Piston rod diameter  
D1 : Tube diameter  
F : Force ( F1 )



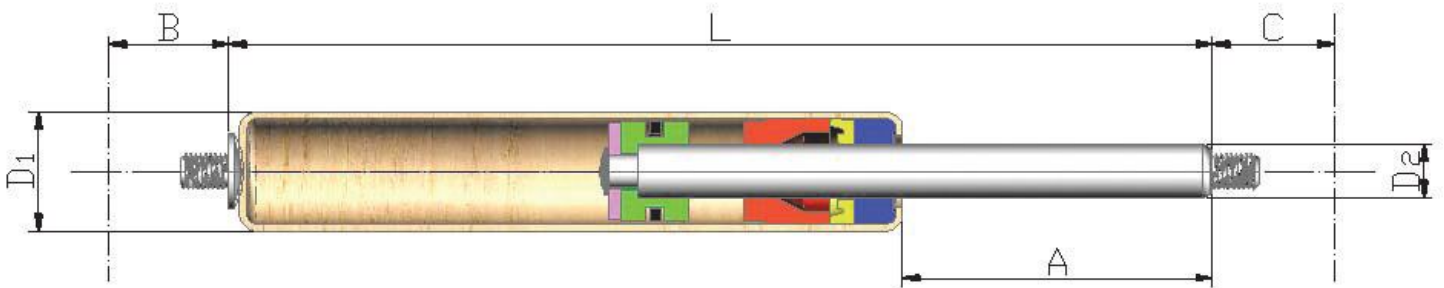
TYPE		L		A		F	
D1	D2	Min.	Max.	Min.	Max.	Min.	Max.
22	10	250	1000	50	350	130	800
27	10	250	1000	50	350	130	1500

• ***GAS SPRINGS WITH LOCKING TUBE***



TYPE		L		A		F	
D1	D2	Min.	Max.	Min.	Max.	Min.	Max.
15	06	90	400	20	150	50	350
18	08	100	700	25	300	50	700
22	10	150	900	40	400	100	1200
27	14	250	1000	50	700	250	1500
28	14	300	1000	50	700	1000	2500

• **GAS SPRINGS**



L	A	B	C	D1	D2	F

L-OPEN LENGTH  
A-STROKE  
D1-TUBE DIAMETER  
D2-PISTON ROD DIAMETER  
B-TUBE CONNECTION REF.  
C-PISTON ROD CONNECTION REF.  
F-FORCE (NEWTON)



Tel: 021- 270 38 61  
Fax: 021- 270 38 62; 031- 816 92 62  
Mobil: 0724 484 678; 0748 852 317  
E-mail: [amgindustrial@yahoo.ro](mailto:amgindustrial@yahoo.ro)  
Web: [www.wizyon.ro](http://www.wizyon.ro)